

eChamber

Spacer Information



Turbo 220ml
Neonate, Infant, Child and Adult

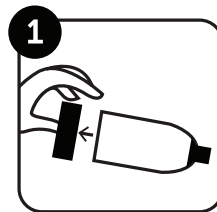


La Grande 510ml
Adult

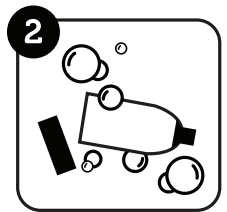
Please note:

- eChamber Spacers are made from anti-static plastic so require no priming
- Always have the spacer in your mouth when you press the puffer and ensure a good seal with lips around the mouthpiece
- Use a mask for Neonates and Infants that cannot seal their lips around the mouthpiece and always ensure a good seal is achieved with the mask
- Always follow the instructions provided with your inhaler
- Check for foreign objects, broken or deteriorated parts prior to use and contact your health professional if you have concerns
- Listen for the valve clicking when you breathe in and out. This indicates sufficient inspiratory/expiratory flow and proper technique

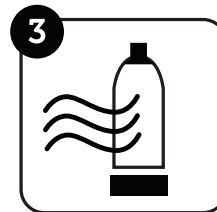
Cleaning Instructions



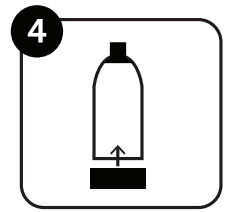
Remove base only



Wash in soapy water



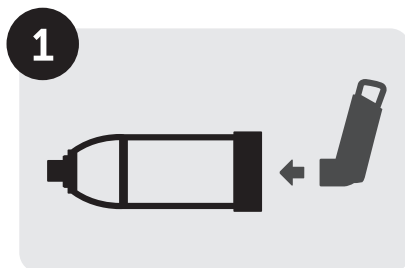
Allow to air dry



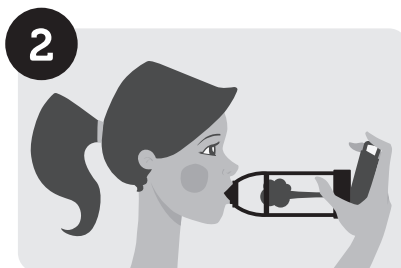
Replace base once dry

Recommendations for use

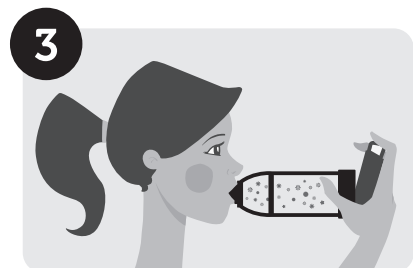
Clean once a week



Remove cap and shake the puffer, then insert puffer into the spacer as shown



Place lips around mouthpiece
Press puffer



Breathe in and out normally through the mouth 4–6 times
If more than one puff is required, repeat step 2–3

